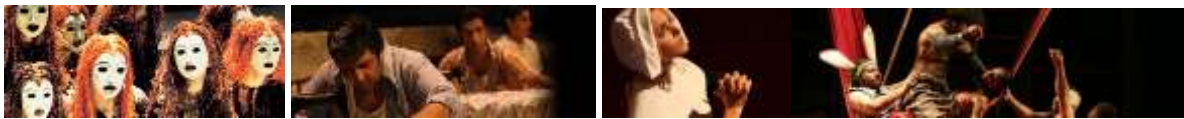




A LEVEL DRAMA AND THEATRE

The **EDEXCEL** Drama and Theatre AS and A Level courses aim to:

- promote an enjoyment of and an interest in DRAMA both as a PARTICIPANT and as an INFORMED member of an AUDIENCE.
- extend the skills, knowledge and understanding needed to communicate through DRAMA and THEATRE, encouraging life long learning and providing access to related CAREERS.
- provide a worthwhile, satisfying and complete course of study that broadens experience, develops imagination, fosters creativity, and promotes PERSONAL and SOCIAL DEVELOPMENT.
- encourage the appreciation of SOCIAL, CULTURAL and HISTORICAL influences on THEATRE PRACTICE both PAST and PRESENT.



AS and A Levels in Drama and Theatre will be assessed through :

- 40% written exam
- 60% non-examined assessment

AS will be a separate, linear qualification.



AS LEVEL:

EXPLORATION OF TEXT:

AS students will need to demonstrate a practical understanding of:

- a minimum of ONE complete performance text
- a minimum of TWO key extracts from two different texts, placed in the context of the whole text.

PRACTITIONERS:

AS Students must study the work and methodologies of one influential theatre practitioner – this can be an individual or a theatre company

PERFORMANCE:

AS students will need to participate in a minimum of one performance from a text, which has been studied as part of the course

40% WRITTEN EXAMINATION



60% Internally assessed
Externally moderated

A LEVEL:

EXPLORATION OF TEXT:

A Level students will need to demonstrate a practical understanding of:

- a minimum of TWO complete performance texts
- a minimum of THREE key extracts from THREE different texts, placed in the context of the whole text.

PRACTITIONERS

A Level students must study the work and methodologies of one influential theatre practitioner – this can be an individual or a theatre company

PERFORMANCE:

A level students must participate in a minimum of two performances, one devised and one from a performance text which has been studied as part of the course.

40% WRITTEN EXAMINATION



60% Internally assessed
Externally moderated

Final details of the Drama and Theatre A Level will not be published until Autumn 2015 - therefore the information above may be subject to change.



WHAT EXACTLY DO AS AND A LEVEL INVOLVE?

The course is concerned with the practical exploration of **DRAMA & THEATRE**- creating your own original performances, exploring text and reviewing productions seen. The course combines a practical and theoretical study of plays, theatre practitioners, designers, artists and directors.

WHAT WILL BE EXPECTED OF ME?

GCSE Drama Grade C or above - and a passion for Drama.

WHAT QUALIFICATIONS DO I NEED?

In addition to attending lessons, you will be working in your own time on: research, preparation, wider reading, exploration notes, structured records, exam essay questions, practical rehearsals, directing & theatre design for your practical work and written examinations.